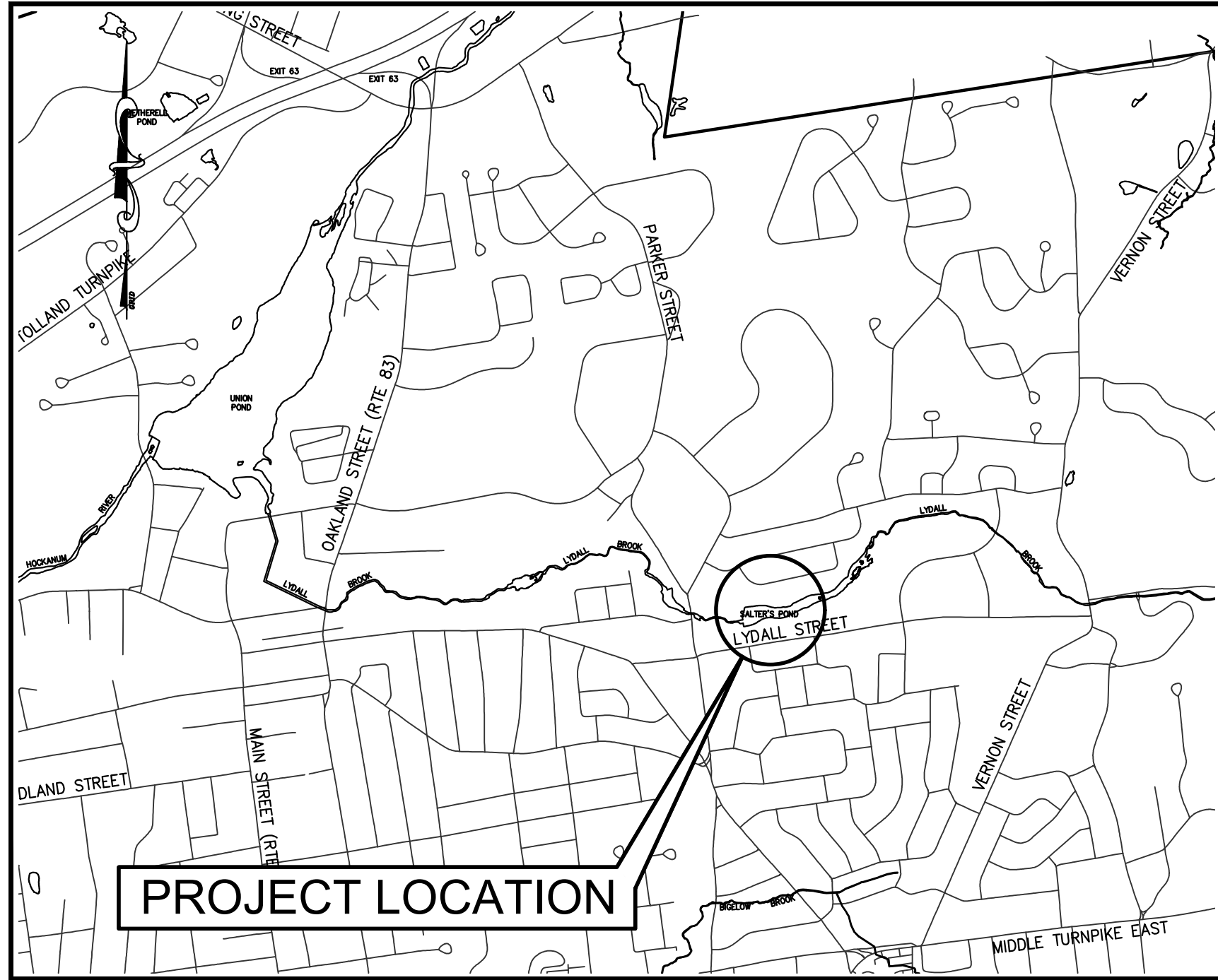


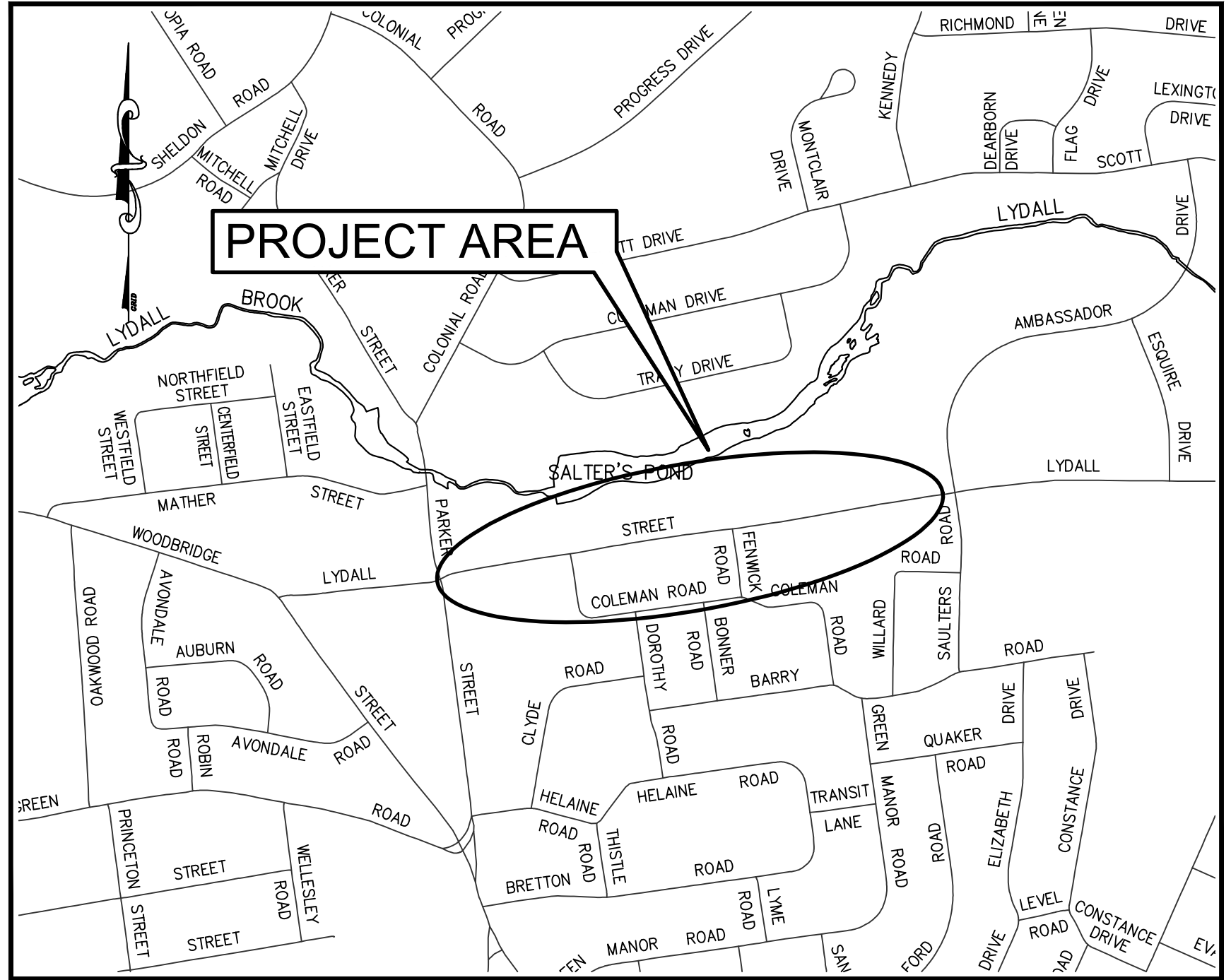
TOWN OF MANCHESTER

PUBLIC WORKS DEPARTMENT

ENGINEERING DIVISION



LOCATION MAP
1" = 1500'



SITE MAP
1" = 600'

SIDEWALK INSTALLATIONS

LYDALL STREET

AUGUST 2024

DESIGN STANDARD : TOWN OF MANCHESTER PUBLIC IMPROVEMENT STANDARDS, EFFECTIVE DATE OCTOBER 31, 2020, AS AMENDED

DATUMS : HORIZONTAL DATUM: TOWN OF MANCHESTER CONTROL NETWORK (NAD83 AS ESTABLISHED IN 1998)
VERTICAL DATUM: TOWN OF MANCHESTER CONTROL NETWORK (NAVD88 USING GEOID 96)

STANDARD SPECIFICATIONS : SEE CONTRACT DOCUMENTS

DESIGN SCALES : PLAN: 1" = 20'
OTHER SCALES AS NOTED

LIST OF DRAWINGS	
SHEET NO.	DESCRIPTION
1	COVER SHEET
2	TYPICAL SECTIONS AND NOTES
3-4	PLAN SHEETS
5	DETAILS
	DOT CONCRETE SIDEWALK RAMPS SHEET 5 OF 11

DESIGNED BY:
TOWN OF MANCHESTER
ENGINEERING DIVISION

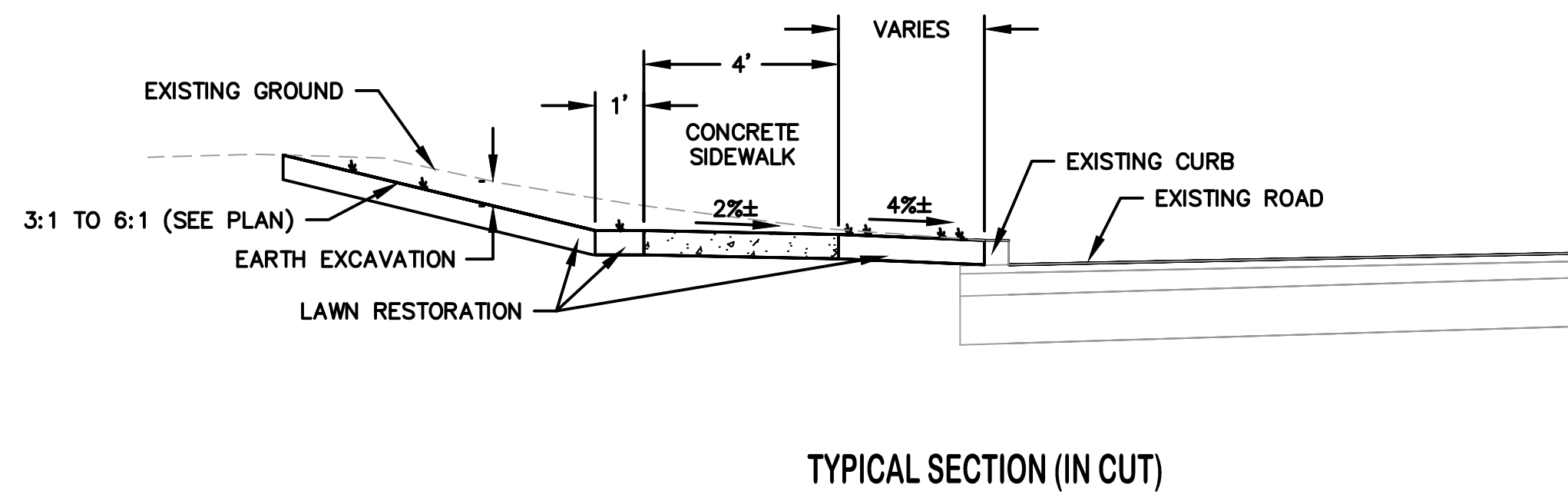
JEFF LAMALVA
TOWN ENGINEER
P.E. NO. 20967

GENERAL NOTES:

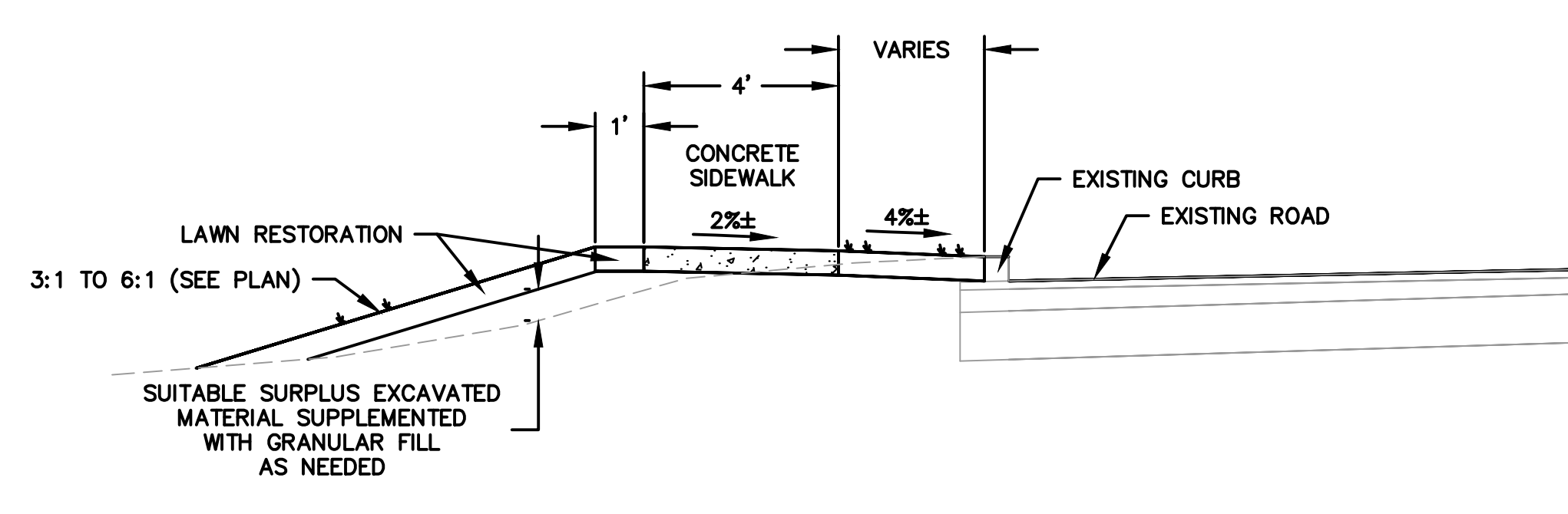
- ALL MATERIALS AND METHODS OF CONSTRUCTION SHALL BE IN ACCORDANCE WITH THE "MANCHESTER PUBLIC IMPROVEMENT STANDARDS" EFFECTIVE OCTOBER 31, 2020, AS AMENDED AND THE STATE OF CONN. DEPT. OF TRANSPORTATION STANDARD SPECIFICATIONS FOR ROADS, BRIDGES, FACILITIES AND INCIDENTAL CONSTRUCTION, FORM 818, DATED 2020, INCLUDING ANY SUPPLEMENTS.
- ALL ELEVATIONS ARE BASED ON THE TOWN OF MANCHESTER CONTROL NETWORK.
- IMPLEMENTING WORKER SAFETY AND HEALTH PROTOCOLS THAT ADDRESS COMPLIANCE WITH ALL RULES, LAWS AND REGULATIONS REGARDING SAFETY AND RISK OF EXPOSURE TO PHYSICAL AND CHEMICAL HAZARDS IS THE SOLE RESPONSIBILITY OF THE CONTRACTOR. ALL EMPLOYEES OF THE CONTRACTOR AND SUBCONTRACTORS ARE TO WEAR REFLECTIVE VESTS AND HARD HATS AT ALL TIMES WHEN ON THE PROJECT SITE.
- A PRECONSTRUCTION MEETING WITH TOWN STAFF IS REQUIRED PRIOR TO THE START OF ANY CONSTRUCTION ACTIVITY.
- THE CONTRACTOR SHALL PHASE CONSTRUCTION OPERATIONS TO MINIMIZE THE SIZE OF DISTURBED AREAS AND PERIOD OF TIME THESE AREAS ARE LEFT UNSTABILIZED AND SUBJECT TO EROSION. THIS INCLUDES, BUT IS NOT LIMITED TO, INSTALLATION OF DRAINAGE SYSTEMS DURING THE EARLY STAGES OF CONSTRUCTION AND LIMITING LENGTHS OF RECLAMATION AND FULL-DEPTH ROAD RECONSTRUCTION AREAS TO ALSO LESSEN IMPACTS TO VEHICLE AND PEDESTRIAN TRAVEL THROUGH THE PROJECT AREA.
- THE CONTRACTOR SHALL TAKE CARE NOT TO DISTURB EXISTING MONUMENTATION THAT MAY BE PRESENT NEAR THE PROJECT AREA.
- THE CONTRACTOR IS RESPONSIBLE TO OBTAIN ALL REQUIRED PERMITS AND PAY ASSOCIATED FEES PRIOR TO ANY CONSTRUCTION ACTIVITY.
- THE CONTRACTOR SHALL CONFINE ALL OPERATIONS AND ACTIVITIES FOR CONSTRUCTION PURPOSES WITHIN THE STREET LINE AND LIMITS OF UTILITY EASEMENTS UNLESS SHOWN OTHERWISE ON THE PLANS.
- THE CONTRACTOR SHALL RESTORE TWO LANES OF TRAFFIC ON XXX STREET AT THE END OF EACH WORK DAY. IT IS ANTICIPATED THAT THE ROAD WILL REMAIN OPEN AT ALL TIMES WITH ALTERNATING ONE LANE TRAFFIC DURING CONSTRUCTION.
- THE CONTRACTOR SHALL COMMIT SUFFICIENT RESOURCES TO THE PROJECT TO ENSURE THE PROJECT IS COMPLETED WITHIN THE ALLOTTED CONTRACT TIME. ONCE MOBILIZED, THE CONTRACTOR SHALL WORK CONTINUOUSLY ON THE PROJECT UNTIL COMPLETION. ANY UNAUTHORIZED VACATING OF THE JOBSITE IS SUBJECT TO PENALTIES DESCRIBED UNDER THE "LIQUIDATED DAMAGES" SECTION OF THE CONTRACT SPECIFICATIONS.
- THE CONTRACTOR SHALL NOT STORE CONSTRUCTION EQUIPMENT OR MATERIALS WITHIN THE PUBLIC RIGHT-OF-WAY.
- CONSTRUCTION ENTRANCES ARE NOT SHOWN ON THE PLAN; HOWEVER, THEY SHALL BE INSTALLED WHERE DIRECTED BY THE ENGINEER DURING CONSTRUCTION FOR EGRESS FROM TEMPORARY STOCKPILE AREAS. THE PROPOSED LOCATION OF STOCKPILE AREAS SHALL BE IDENTIFIED BY THE CONTRACTOR.
- NO WORK SHALL COMMENCE UNTIL ALL CONSTRUCTION AREA SIGNS ARE IN PLACE.
- THE CONTRACTOR SHALL PROVIDE TEMPORARY ACCESS TO ALL DRIVEWAYS AT ALL TIMES.
- ALL GRASSED AREAS DISTURBED BY THE CONTRACTOR SHALL BE REPLACED WITH TOPSOIL, FERTILIZED AND SEEDDED AS PER THE SPECIFICATIONS. CONTRACTOR SHALL MAKE ALL EFFORTS TO MINIMIZE THE LIMITS OF DISTURBANCE AND ASSOCIATED RESTORATION THAT IS REQUIRED.
- ANY DRIVEWAYS, SIDEWALKS, CURB AND LAWN AREAS LOCATED ON PRIVATE PROPERTY OR WITHIN THE RIGHT-OF-WAY THAT ARE IMPACTED DURING CONSTRUCTION SHALL BE RESTORED TO PRE-CONSTRUCTION CONDITIONS AS IDENTIFIED ON THE PLANS OR AS DIRECTED BY THE ENGINEER. THE REQUIRED LIMITS OF SUCH RESTORATION SHALL BE DETERMINED BY THE ENGINEER IN THE FIELD. RESTORATION ON PRIVATE PROPERTY SHALL BE COMPLETED AS PROMPTLY AS PRACTICAL WITHIN THIRTY (30) CALENDAR DAYS OF COMPLETING WORK ON THE PROPERTY.
- PROTECTION, REMOVAL AND REPLACEMENT OF EXISTING FEATURES SUCH AS, BUT NOT LIMITED TO, WALLS, FENCES, TREES, SHRUBS AND PLANTS FOR INSTALLATION OF SEWER LATERALS, WATER SERVICES, SEGMENTAL BLOCK WALLS AND GENERAL SITE WORK WILL NOT BE MEASURED SEPARATELY FOR PAYMENT BUT SHALL BE INCLUDED IN THE GENERAL COST OF THE CONTRACT. CONTRACTOR SHALL TAKE CARE TO PROTECT EXISTING FEATURES THAT ARE TO BE REINSTALLED. ALL OTHER FEATURES IDENTIFIED TO BE REPLACED ON THE PLANS SHALL BE PAID FOR UNDER THE ASSOCIATED CONTRACT BID ITEM. THIS WORK REQUIRED ON PRIVATE PROPERTIES SHALL BE COMPLETED AS PROMPTLY AS PRACTICAL WITHIN THIRTY (30) CALENDAR DAYS OF COMPLETING WORK ON THE PROPERTY.
- ACTUAL LIMITS OF CURB INSTALLATION AND DRIVEWAY RECONSTRUCTION SHALL BE DETERMINED IN THE FIELD BY THE ENGINEER. THE CONTRACTOR SHALL AVOID IMPACTS TO EXISTING DRIVEWAYS WHEREVER POSSIBLE TO MINIMIZE REQUIRED RECONSTRUCTION LIMITS.
- ALL SEDIMENT CONTROL SYSTEMS SHALL MEET THE "GUIDELINES FOR SOIL EROSION AND SEDIMENT CONTROL" AS PREPARED BY THE CONNECTICUT COUNCIL ON SOIL AND WATER CONSERVATION, LATEST REVISION. THE CONTRACTOR IS RESPONSIBLE FOR THE INSTALLATION, MAINTENANCE AND REPAIR OF EROSION CONTROLS REQUIRED FOR THE PROJECT. ADDITIONAL EROSION CONTROLS SHALL BE INSTALLED BY THE CONTRACTOR FOR TEMPORARY STOCKPILING OF EXCAVATED MATERIAL AND WHERE DEEMED NECESSARY BY THE ENGINEER. EROSION CONTROLS SHALL REMAIN IN PLACE AND BE MAINTAINED BY THE CONTRACTOR UNTIL THE SITE IS STABILIZED AND THE ENGINEER APPROVES THEIR REMOVAL.
- SILT SACKS SHALL BE INSTALLED IN ALL EXISTING AND PROPOSED CATCH BASINS WITHIN THE PROJECT AREA AND WHERE DIRECTED BY THE ENGINEER. SILT SACKS SHALL BE THE APPROPRIATE TYPE FOR CATCH BASINS WITH AND WITHOUT CURB INLETS.
- HORIZONTAL AND VERTICAL LOCATIONS OF PROPOSED WORK MAY BE ADJUSTED TO FIT EXISTING FIELD CONDITIONS WITH THE APPROVAL OF THE ENGINEER.
- THE CONTRACTOR SHALL IMMEDIATELY NOTIFY THE ENGINEER IF CONDITIONS ENCOUNTERED IN THE FIELD ARE DIFFERENT THAN INFORMATION SHOWN ON THE PLANS.
- THE EXISTENCE OF UTILITIES AND APPURTENANCES AS SHOWN ON THESE

DRAWINGS ARE FOR REFERENCE ONLY. THE EXACT SIZE, LOCATION, TYPE, AND ELEVATION OF ALL UTILITIES WITHIN ALL WORK AREAS SHALL BE THOROUGHLY INVESTIGATED BY THE CONTRACTOR PRIOR TO THE START OF CONSTRUCTION. THE CONTRACTOR SHALL BE RESPONSIBLE FOR NOTIFYING "CALL-BEFORE-YOU-DIG" AT 1-800-922-4455 AND MUST HAVE ALL UTILITIES MARKED ON THE GROUND PRIOR TO THE START OF CONSTRUCTION.

- THE QUANTITIES AS INDICATED IN THE CONTRACT DOCUMENTS ARE APPROXIMATE AND MAY NOT INDICATE THE ACTUAL QUANTITIES OF WORK REQUIRED. THE CONTRACTOR MUST VERIFY ALL QUANTITIES.
- SURPLUS EXCAVATED MATERIAL SHALL BECOME THE PROPERTY OF THE CONTRACTOR. THE CONTRACTOR SHALL DISPOSE OF SURPLUS EXCAVATED MATERIAL IN ACCORDANCE WITH STATE AND FEDERAL REGULATIONS.
- THE CONTRACTOR SHALL BE RESPONSIBLE FOR TEMPORARY HANDLING OF ALL STORMWATER RUNOFF DURING CONSTRUCTION. METHODS OF HANDLING RUNOFF SHALL BE APPROVED BY THE ENGINEER.



TYPICAL SECTION (IN CUT)



TYPICAL SECTION (IN FILL)



TOWN OF MANCHESTER
PUBLIC WORKS DEPARTMENT
ENGINEERING DIVISION
494 MAIN STREET - P.O. BOX 191
MANCHESTER, CT 06045-0191

LEGEND

— WETLANDS BOUNDARY	☆ LIGHT POLE
— RETAINING WALL	⊗ CONIFEROUS TREE
— GUEE WALL	⊗ DEODOROUS TREE
— STONE WALL	⊗ SANITARY MANHOLE
— STOCKAGE FENCE	⊗ DRAINAGE MANHOLE
— WIRE FENCE	⊗ CATCH BASIN
— CHAIN LINK FENCE	⊗ CULVERT END
— PROPERTY LINE	⊗ HYDRANT
— RAILROAD TRACKS	⊗ CURB STOP
— SILT FENCE	⊗ WATER VALVE
□ CONCRETE MONUMENT	⊗ BUTTERFLY VALVE
■ GRANITE MONUMENT	⊗ BLOW OFF
○ IRON PIPE	⊗ SIGN
● IRON ROD	⊗ DOUBLE POST SIGN
△ CONTROL POINT	⊗ MAIL BOX
● DRILL HOLE	⊗ BOLLARD
⊗ UTILITY POLE	⊗ CONTROLLER CABINET
⊗ UTILITY POLE WITH LIGHT	⊗ GAS GATE
⊗ ELECTRIC BOX	⊗ TELEPHONE BOX
△ WETLAND FLAG	⊗ CATV TUBE

PROJECT NUMBER
2023107

FILENAME
2023107-PLAN.DWG

NO.	DATE	FILE
—	07/30/24	FOR BIDDING

DRAWN BY: JL
CHECKED BY: JL
RELEASED BY: TB

DATUM
HORIZONTAL: NAD83 VERTICAL: NAVD88

PROJECT LOCATION
**LYDALL STREET
MANCHESTER, CT**

PROJECT TITLE
**SIDEWALK INSTALLATIONS
ON LYDALL STREET**

SHEET TITLE
**TYPICAL SECTION
AND NOTES**

SHEET NUMBER
2 of 5



TOWN OF MANCHESTER
PUBLIC WORKS DEPARTMENT
ENGINEERING DIVISION
494 MAIN STREET - P.O. BOX 191
MANCHESTER, CT 06045-0191

LEGEND

---	WETLAND BOUNDARY	☆	LIGHT POLE
---	RETAINING WALL	⊙	CONIFEROUS TREE
---	CURB WALL	⊙	DECIDUOUS TREE
---	STONE WALL	⊙	SANITARY MANHOLE
---	STOCKADE FENCE	⊙	DRAINAGE MANHOLE
---	WIRE FENCE	⊙	CATCH BASIN
---	CHAIN LINK FENCE	⊙	CULVERT END
---	PROPERTY LINE	⊙	HYDRANT
---	RAILROAD TRACKS	⊙	CURB STOP
---	SILT FENCE	⊙	WATER VALVE
---	CONCRETE MONUMENT	⊙	BUTTERFLY VALVE
---	GRANITE MONUMENT	⊙	BLOW OFF
---	IRON PIPE	⊙	SIGN
---	IRON ROD	⊙	DOUBLE POST SIGN
---	CONTROL POINT	⊙	MAIL BOX
---	DRILL HOLE	⊙	BOLLARD
---	UTILITY POLE	⊙	CONTROLLER CABINET
---	UTILITY POLE WITH LIGHT	⊙	GAS GATE
---	TRAFFIC SPAN POLE	⊙	TELEPHONE BOX
---	ELECTRIC BOX	⊙	CATV TUBE
---	WETLAND FLAG	⊙	

PROJECT NUMBER
2023107

FILENAME
2023107-PLAN.DWG

NO.	DATE	FILE
-	07/30/24	FOR BIDDING

DRAWN BY: JL
CHECKED BY: JL
RELEASED BY: TB

DRAWING SCALE
HORIZONTAL: 1" = 20'
VERTICAL: ---
OR AS NOTED
GRAPHIC SCALE

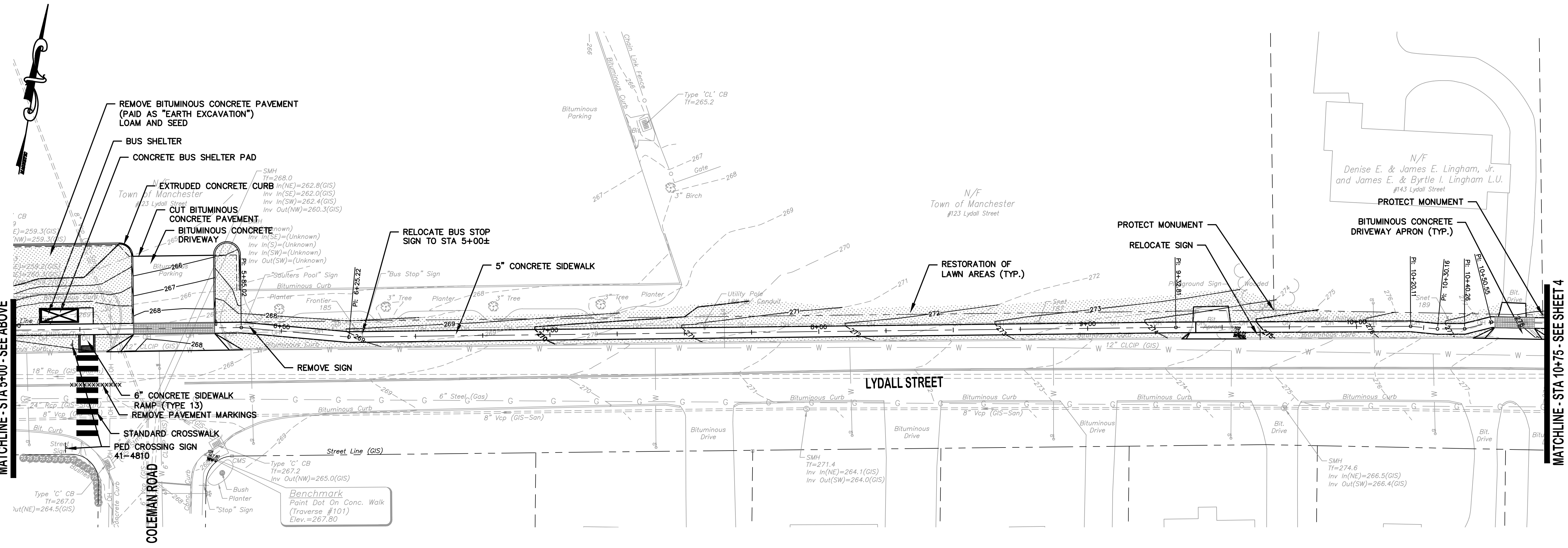
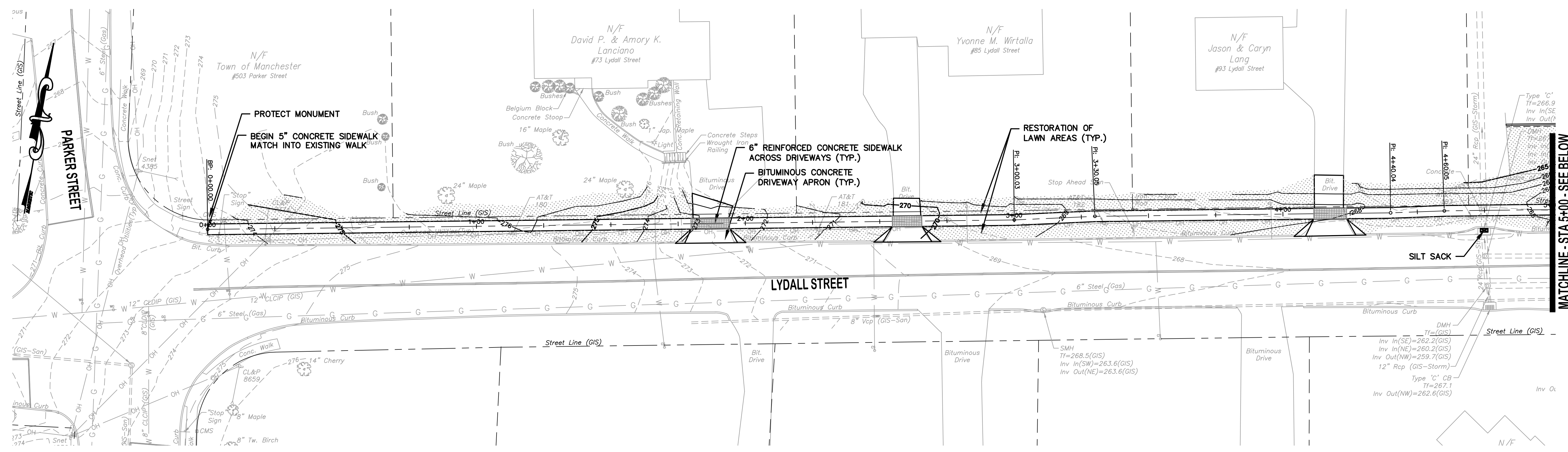
DATUM
HORIZONTAL: NAD83 VERTICAL: NAVD88

PROJECT LOCATION
**LYDALL STREET
MANCHESTER, CT**

PROJECT TITLE
**SIDEWALK INSTALLATIONS
ON LYDALL STREET**

SHEET TITLE
PLAN

SHEET NUMBER
3 of 5



MATCHLINE - STA 5+00 - SEE ABOVE

MATCHLINE - STA 10+75 - SEE SHEET 4



TOWN OF MANCHESTER
PUBLIC WORKS DEPARTMENT
ENGINEERING DIVISION
494 MAIN STREET - P.O. BOX 191
MANCHESTER, CT 06045-0191

LEGEND

- - -	WETLANDS BOUNDARY	☆	LIGHT POLE
- - -	RETAINING WALL	⊗	CONIFEROUS TREE
- - -	STONE WALL	⊗	DECIDUOUS TREE
- - -	STOCKADE FENCE	⊗	SANITARY MANHOLE
- - -	WIRE FENCE	⊗	DRAINAGE MANHOLE
- - -	CHAIN LINK FENCE	⊗	CATCH BASIN
- - -	PROPERTY LINE	⊗	CULVERT END
- - -	RAILROAD TRACKS	⊗	HYDRANT
- - -	SILT FENCE	⊗	CURB STOP
□	CONCRETE MONUMENT	⊗	WATER VALVE
■	GRANITE MONUMENT	⊗	BUTTERFLY VALVE
○	IRON PIPE	⊗	BLOW OFF
●	IRON ROD	⊗	SIGN
△	CONTROL POINT	⊗	DOUBLE POST SIGN
⊗	DRILL HOLE	⊗	MAIL BOX
⊗	UTILITY POLE	⊗	BOLLARD
⊗	UTILITY POLE WITH LIGHT	⊗	CONTROLLER CABINET
⊗	TRAFFIC SPAN POLE	⊗	GAS GATE
⊗	ELECTRIC BOX	⊗	TELEPHONE BOX
⊗	WETLAND FLAG	⊗	CATV TUBE

PROJECT NUMBER
2023107

FILENAME
2023107-PLAN.DWG

NO.	DATE	FILE
-	07/30/24	FOR BIDDING

DRAWN BY: JL
CHECKED BY: JL
RELEASED BY: TB

DRAWING SCALE
HORIZONTAL: 1" = 20'
VERTICAL: ---
OR AS NOTED
GRAPHIC SCALE

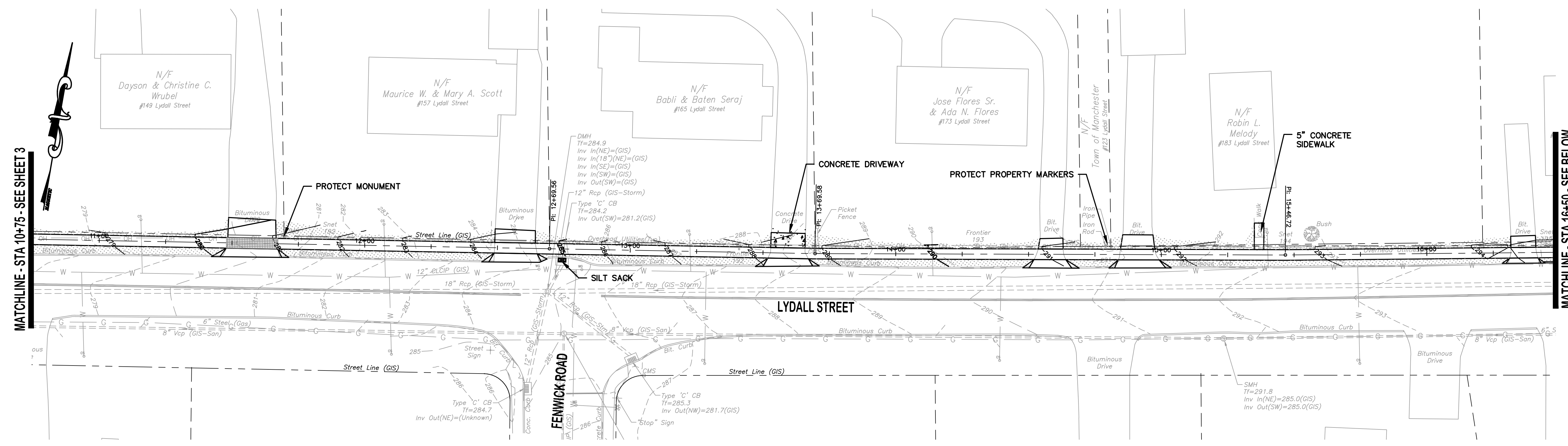
DATUM
HORIZONTAL: NAD83 VERTICAL: NAVD88

PROJECT LOCATION
**LYDALL STREET
MANCHESTER, CT**

PROJECT TITLE
**SIDEWALK INSTALLATIONS
ON LYDALL STREET**

SHEET TITLE
PLAN

SHEET NUMBER
4 of 5



MATCHLINE - STA 10+75 - SEE SHEET 3

MATCHLINE - STA 16+50 - SEE BELOW

MATCHLINE - STA 16+50 - SEE ABOVE



TOWN OF MANCHESTER
PUBLIC WORKS DEPARTMENT
ENGINEERING DIVISION
494 MAIN STREET - P.O. BOX 191
MANCHESTER, CT 06045-0191

LEGEND

—	WETLAND BOUNDARY	☆	LIGHT POLE
—	RETAINING WALL	⊗	CONIFEROUS TREE
—	STONE WALL	⊗	DECIDUOUS TREE
—	STOCKADE FENCE	⊗	SANITARY MANHOLE
—	WIRE FENCE	⊗	DRAINAGE MANHOLE
—	CHAIN LINK FENCE	⊗	CATCH BASIN
—	PROPERTY LINE	⊗	CULVERT END
—	RAILROAD TRACKS	⊗	HYDRANT
—	SILT FENCE	⊗	CURB STOP
⊗	CONCRETE MONUMENT	⊗	WATER VALVE
⊗	GRANITE MONUMENT	⊗	BUTTERFLY VALVE
⊗	IRON PIPE	⊗	BLOW OFF
⊗	IRON ROD	⊗	SIGN
⊗	CONTROL POINT	⊗	DOUBLE POST SIGN
⊗	DRILL HOLE	⊗	MAIL BOX
⊗	UTILITY POLE	⊗	BOLLARD
⊗	UTILITY POLE WITH LIGHT	⊗	CONTROLLER CABINET
⊗	TRAFFIC SPAN POLE	⊗	GAS GATE
⊗	ELECTRIC BOX	⊗	TELEPHONE BOX
⊗	WETLAND FLAG	⊗	CATV TUBE

PROJECT NUMBER
2023107

FILENAME
2023107-PLAN.DWG

NO.	DATE	FILE
—	07/30/24	FOR BIDDING

DRAWN BY: JL
CHECKED BY: JL
RELEASED BY: TB

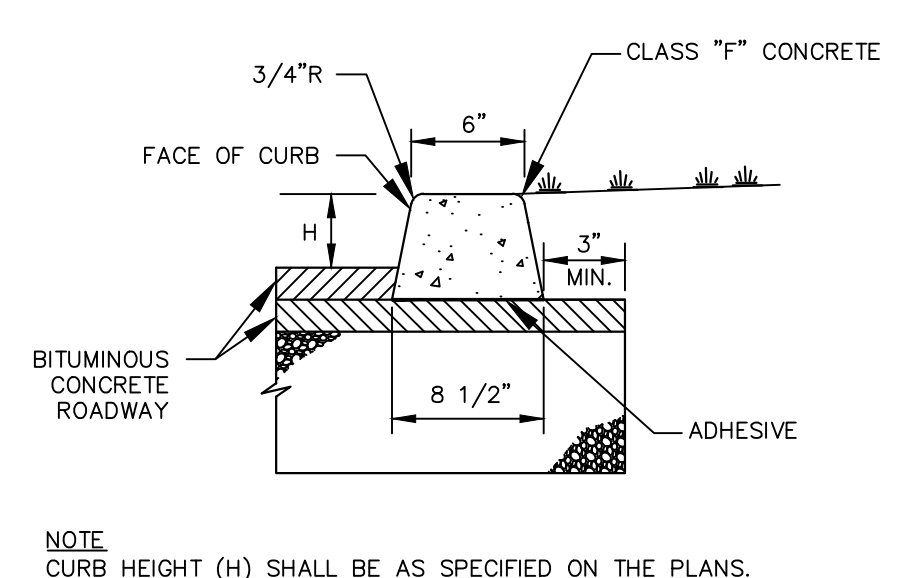
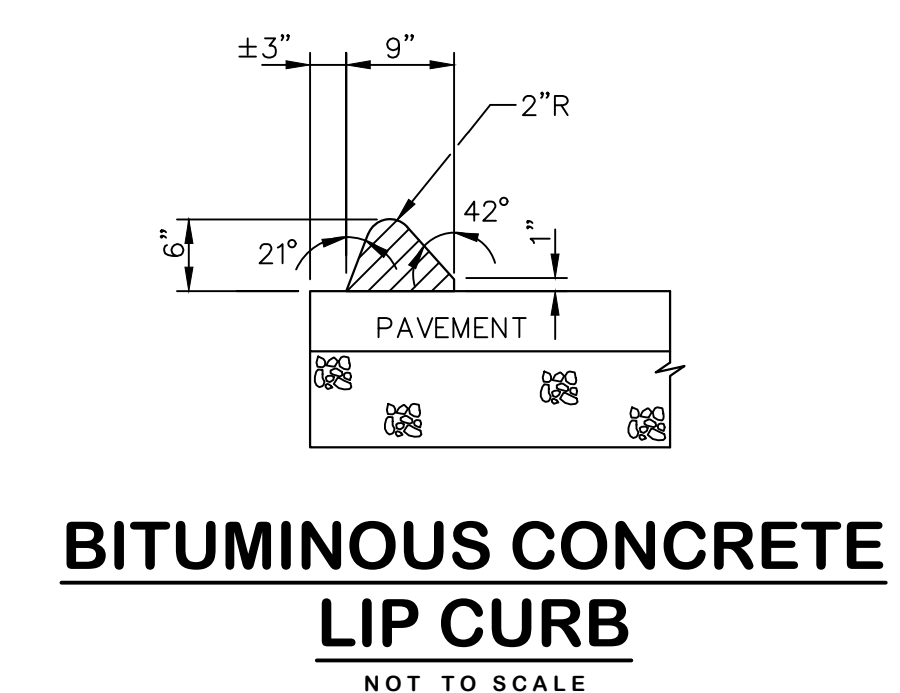
DATUM
HORIZONTAL: NAD83 VERTICAL: NAVD88

PROJECT LOCATION
**LYDALL STREET
MANCHESTER, CT**

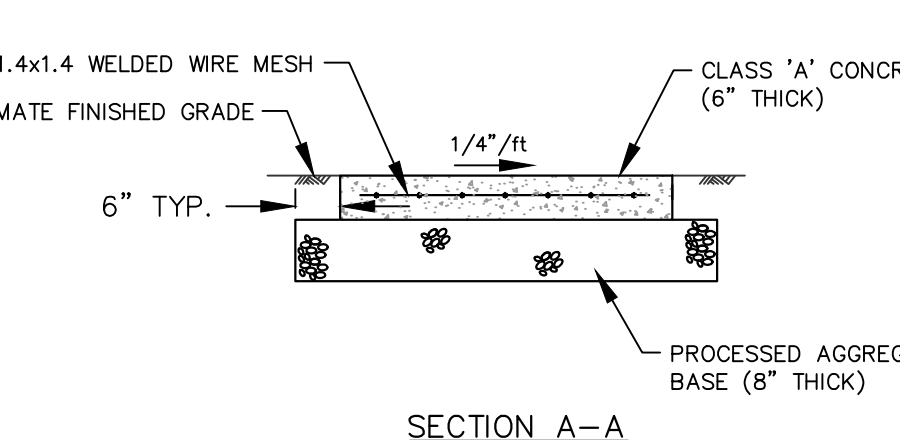
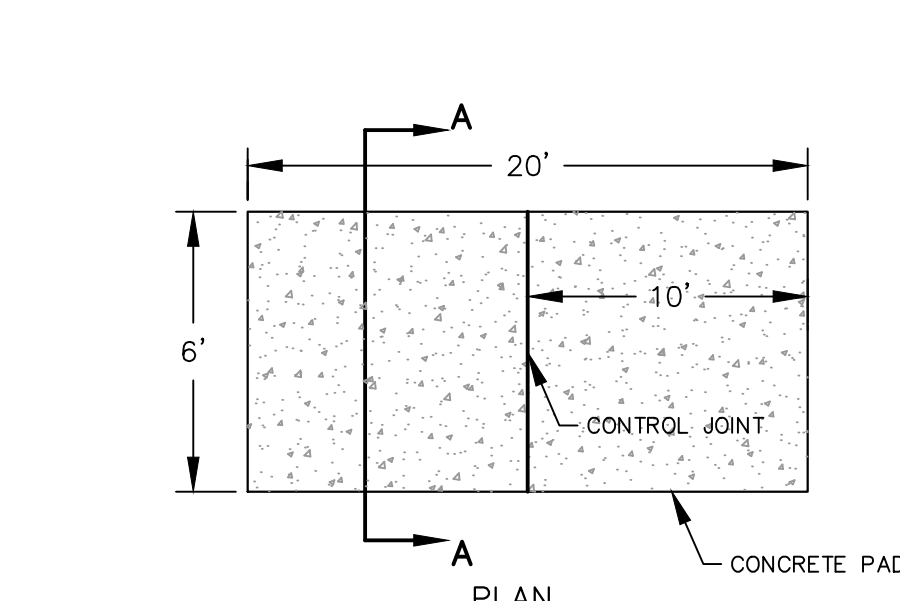
PROJECT TITLE
**SIDEWALK INSTALLATIONS
ON LYDALL STREET**

SHEET TITLE
DETAILS

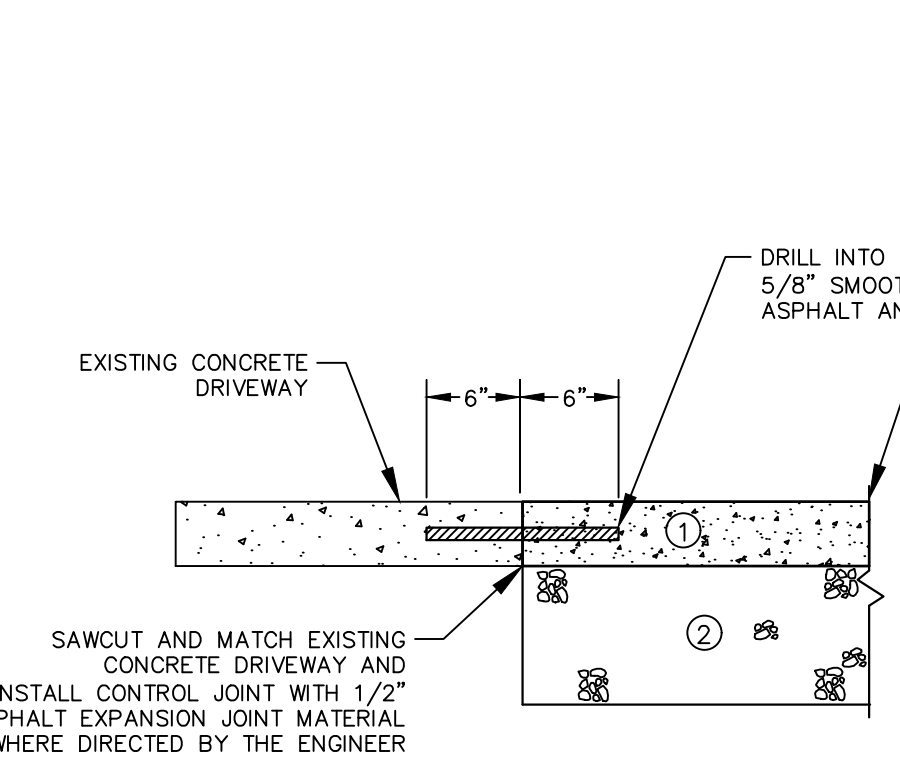
SHEET NUMBER
5 of 5



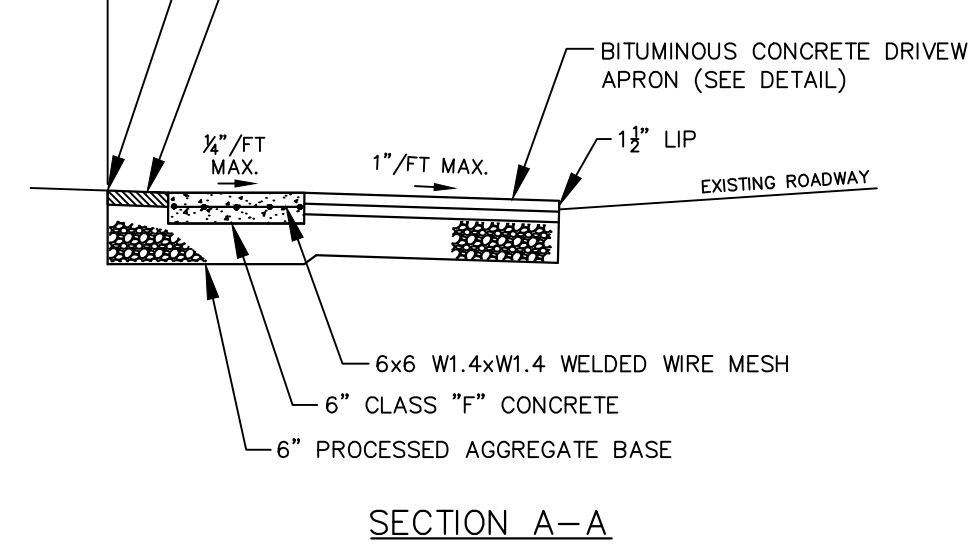
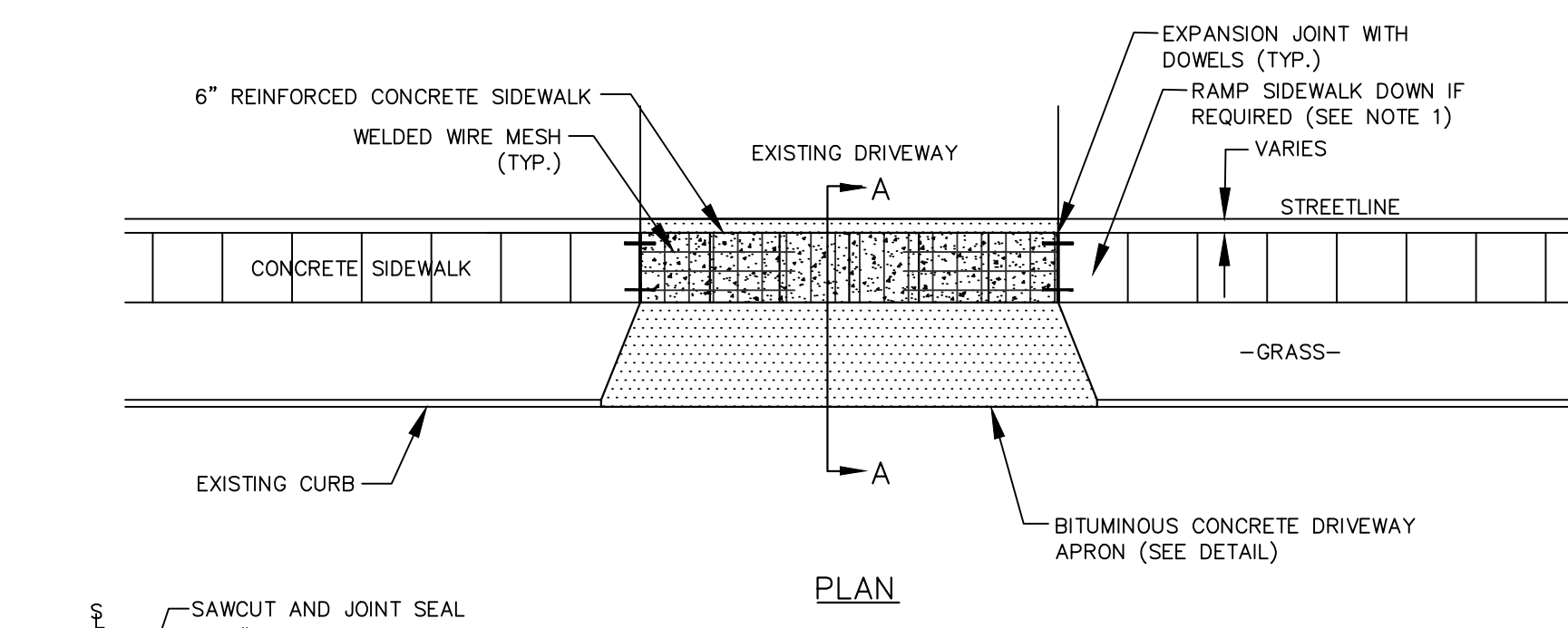
NOTE: CURB HEIGHT (H) SHALL BE AS SPECIFIED ON THE PLANS.



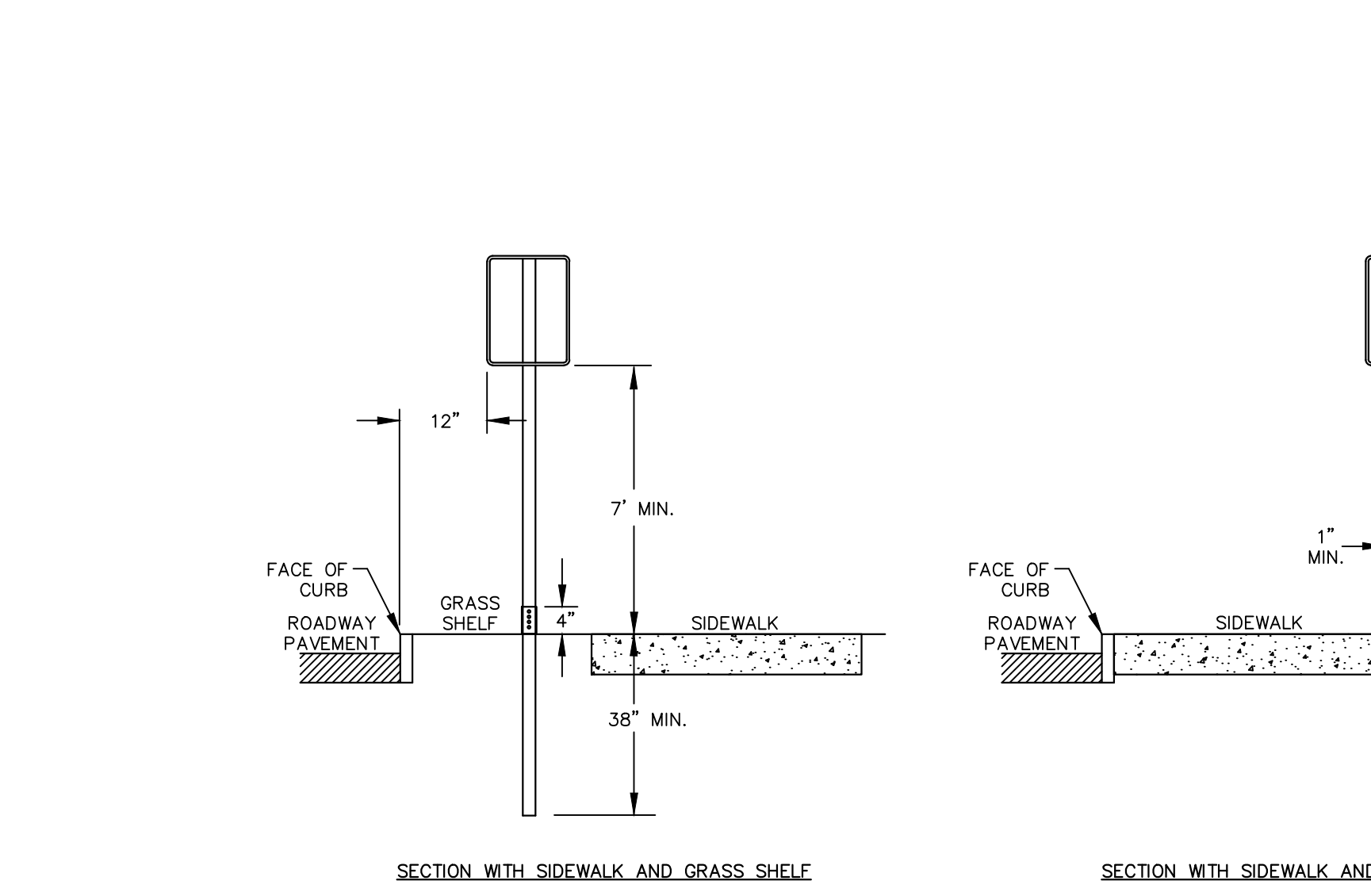
CONCRETE BUS SHELTER PAD
(PAID AS "REINFORCED CONCRETE SIDEWALK")
NOT TO SCALE



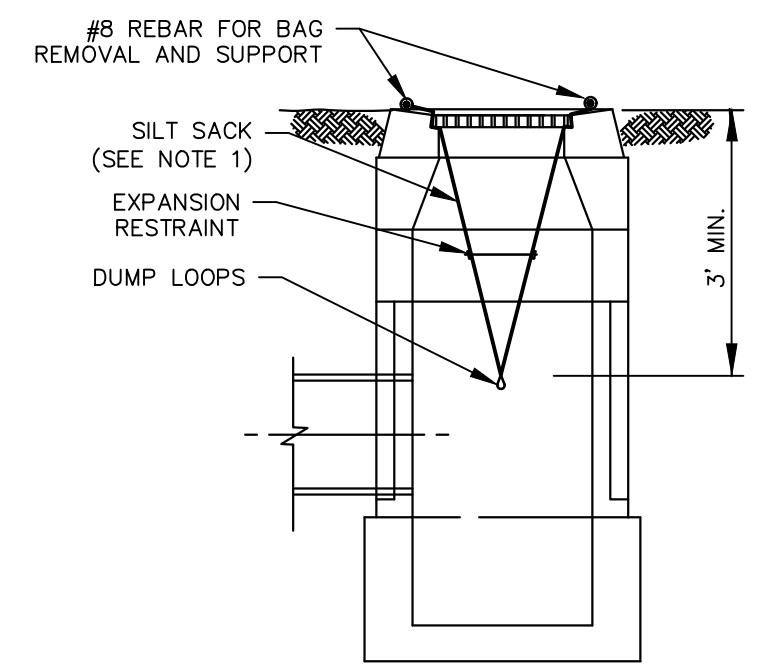
CONCRETE DRIVEWAY
NOT TO SCALE



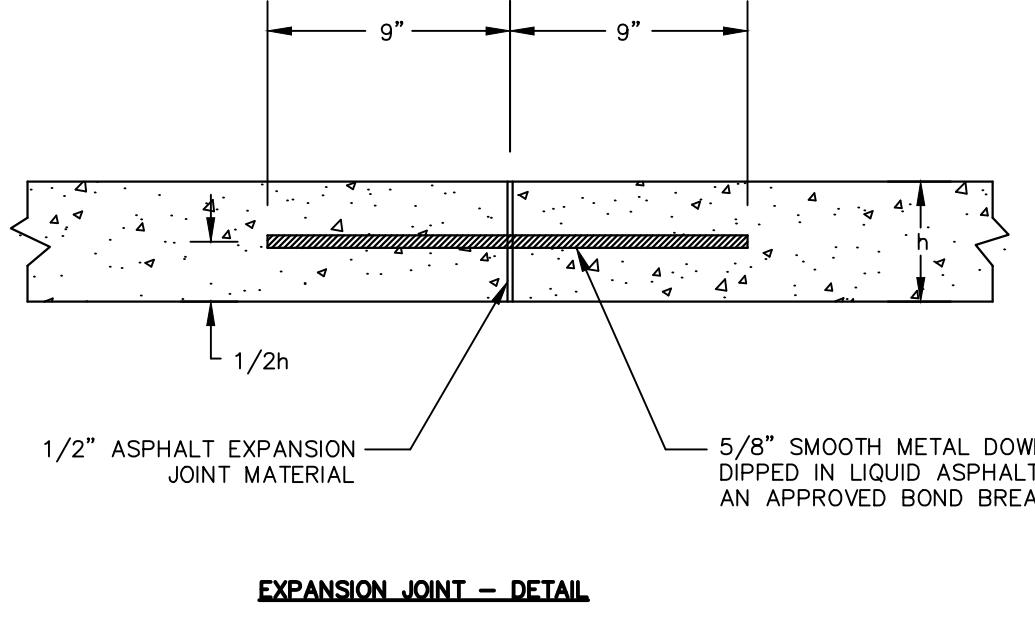
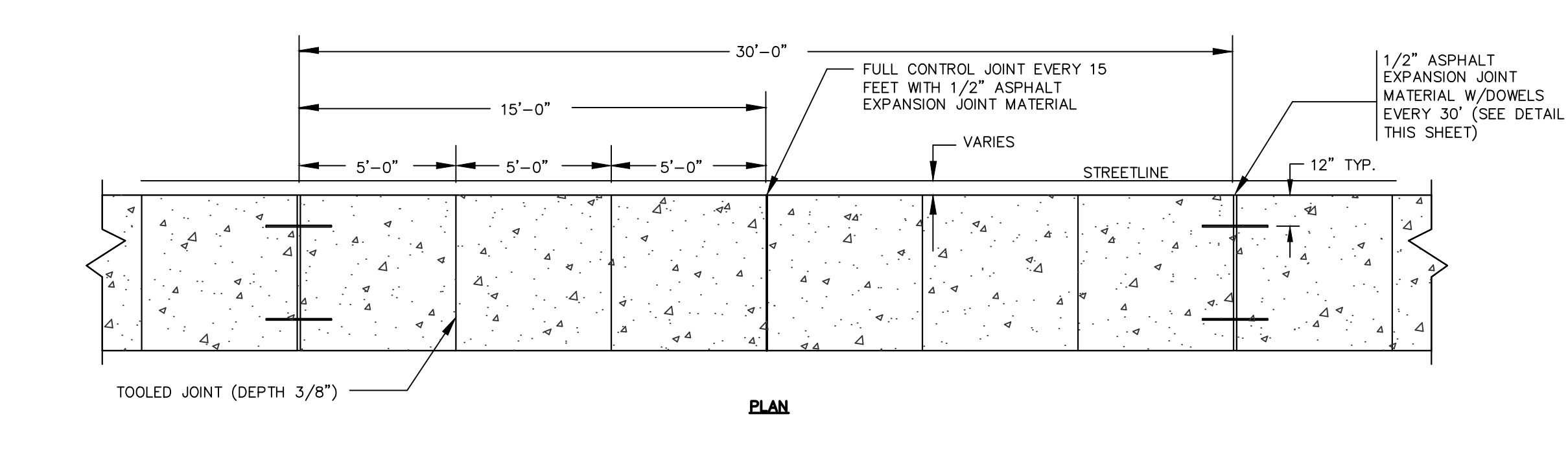
REINFORCED CONCRETE SIDEWALK
NOT TO SCALE



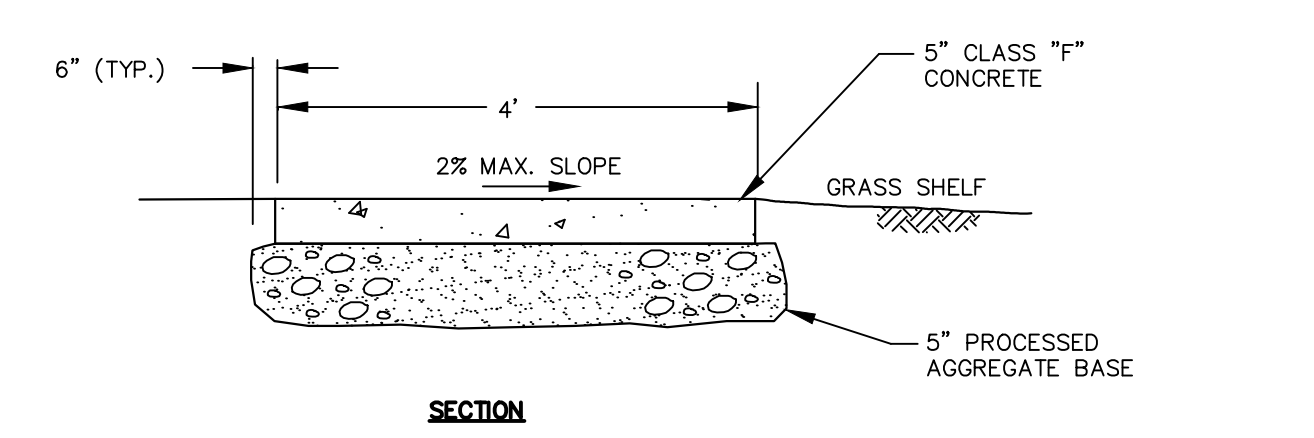
SIGN INSTALLATION - TYPICAL
NOT TO SCALE



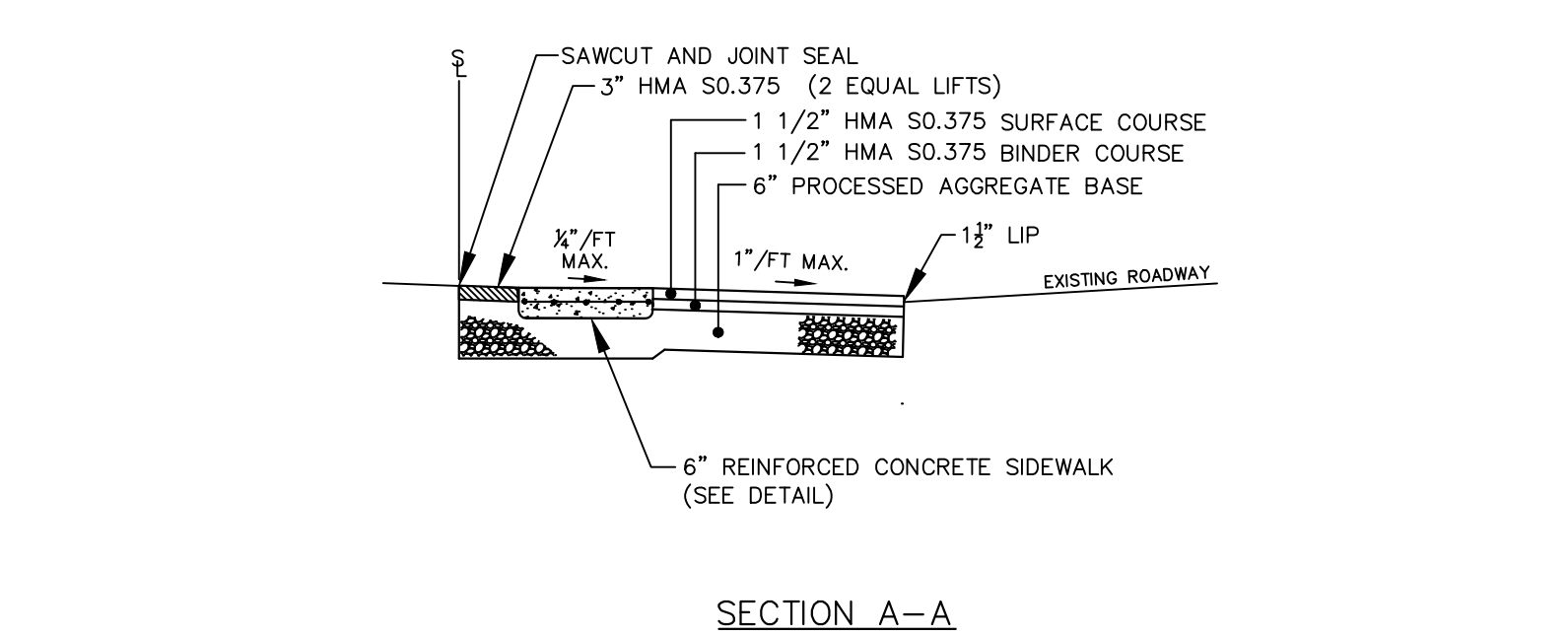
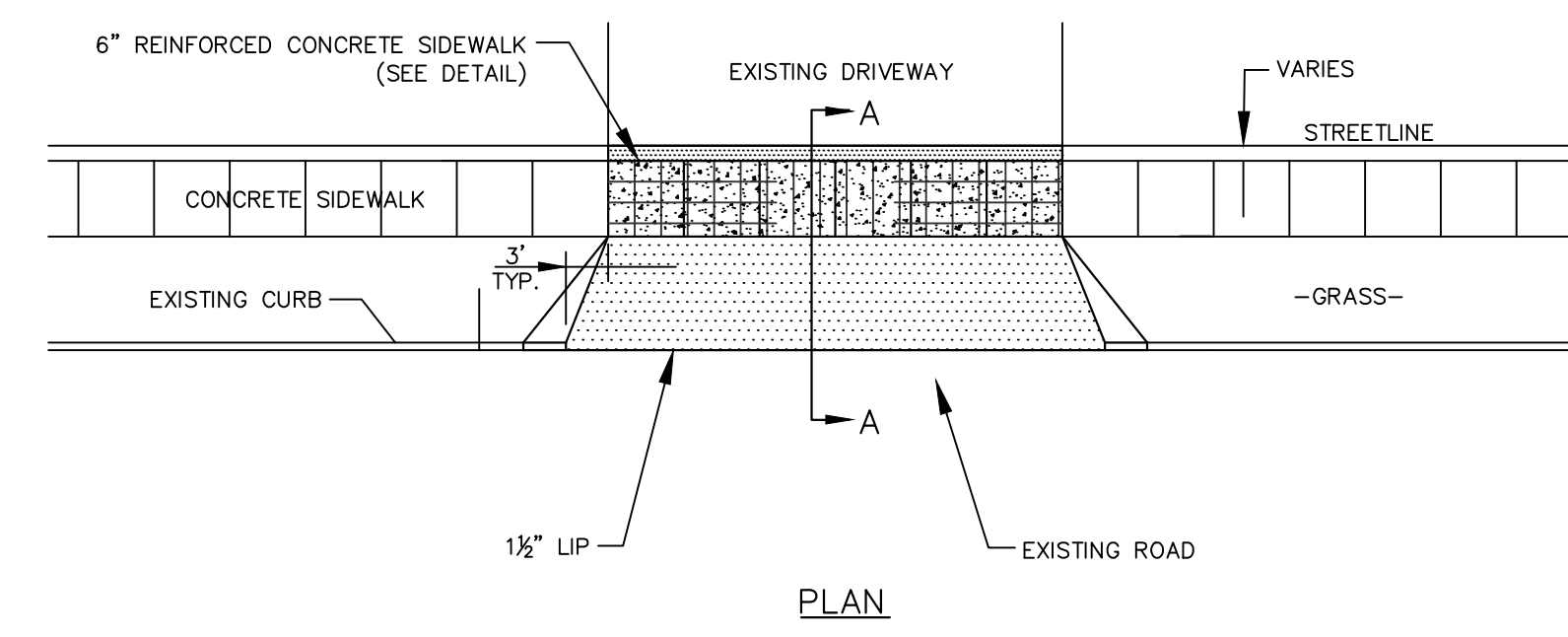
SILT SACK
NOT TO SCALE



5" CONCRETE SIDEWALK
NOT TO SCALE



NOTES:
1. A MINIMUM 42" CLEAR WIDTH SHALL BE MAINTAINED BETWEEN THE EDGES OF THE SIDEWALK AND ANY OBSTRUCTIONS WITHIN THE SIDEWALK LIMITS.
2. AT THE END OF THE DAILY POUR OF CONCRETE, METAL DOWELS ARE TO BE INSERTED IN THE LAST SLAB FOR THE EXTENSION OF THE SIDEWALK.
3. INSTALL APPROVED BOND BREAKER BETWEEN GRANITE CURB AND SIDEWALK.



BITUMINOUS CONCRETE DRIVEWAY APRON
(PAY ITEM: "BITUMINOUS CONCRETE DRIVEWAY")
NOT TO SCALE

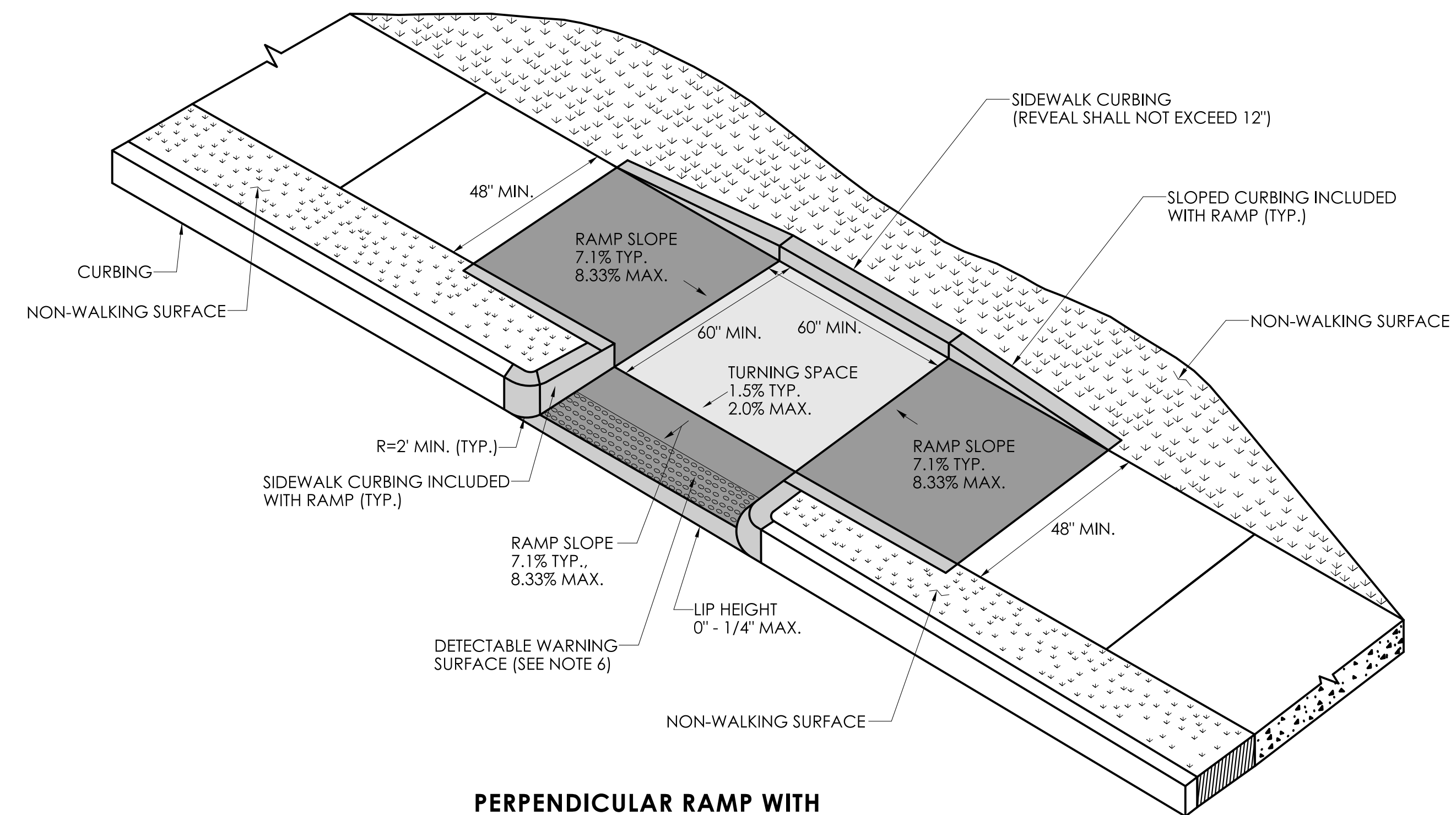
- NOTES:
1. PROPOSED SIDEWALK MAY NEED TO BE RAMPED DOWN TO REINFORCED PORTION EXTENDING ACROSS DRIVEWAY IN ORDER TO MAINTAIN A MAXIMUM 1 1/2" GRADE OF APRON.
2. SEE RESPECTIVE DETAILS FOR ADJACENT CONCRETE SIDEWALK AND BITUMINOUS CONCRETE DRIVEWAY.

- NOTES:
1. SUPPORTS SHALL BE METAL GALVANIZED STEEL POSTS WITH BREAKAWAY COUPLING SYSTEM.
2. WHERE POSTS CANNOT BE INSTALLED BEHIND SIDEWALK, THEY SHALL BE INSTALLED WITH THE EDGE OF THE SIGN 12" FROM FACE OF CURB.

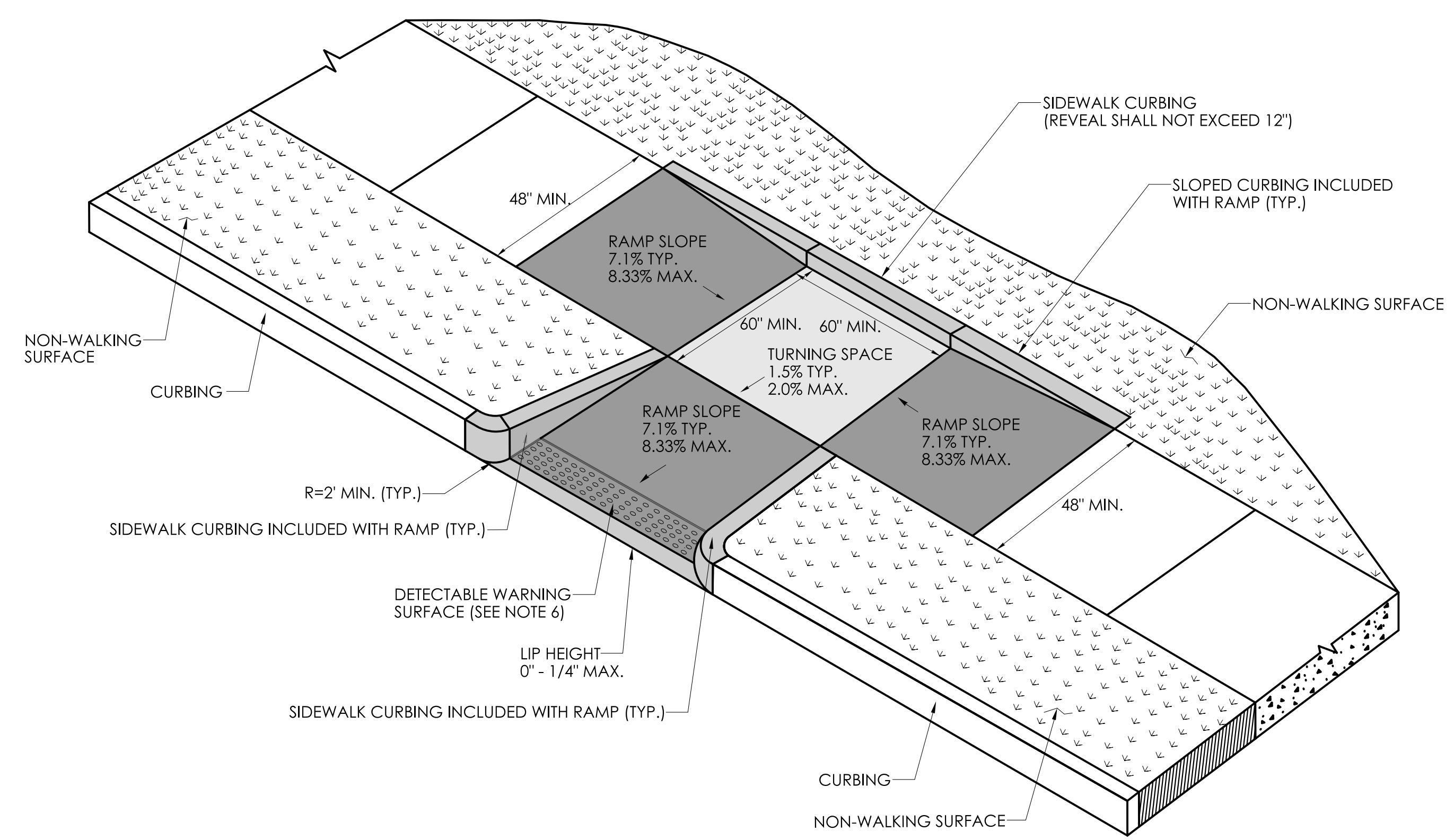
- NOTES:
1. SILT SACKS SHALL BE HI-FLOW SILTSACK® "TYPE A" FOR TYPE "C-L" CB TOPS AND "TYPE B" WITH CURB DEFLECTORS FOR TYPE "C" CB TOPS OR OTHER STRUCTURES WITH CURB INLETS AS MANUFACTURED BY ACF ENVIRONMENTAL, INC OR APPROVED EQUAL.
2. SILT SACKS SHALL BE PROVIDED WITH INTERNAL OVERFLOWS.
3. SILT SACKS SHALL BE EMPTIED WHEN THEY HAVE COLLECTED 6" TO 12" OF SEDIMENT. INSPECT EVERY 1 TO 2 WEEKS AND AFTER EVERY MAJOR RAINFALL EVENT.

GENERAL NOTES:

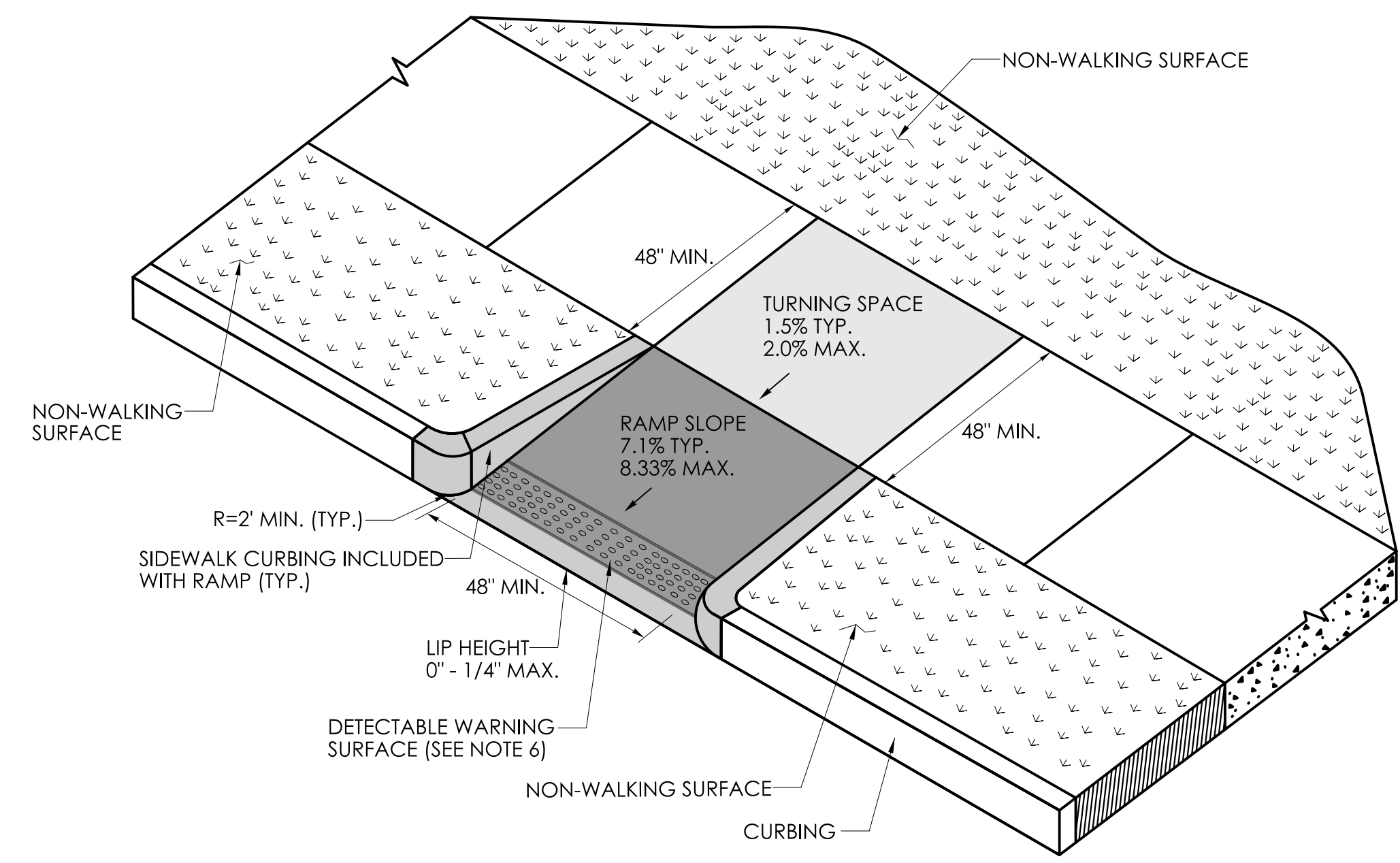
1. SIDEWALK RAMPS SHALL HAVE A COARSE BROOM FINISH TRANSVERSE TO THE SLOPE OF THE RAMP.
2. VERTICAL SURFACE DISCONTINUITIES AT JOINTS SHALL NOT EXCEED 1/4 INCH.
3. REMOVAL OF EXISTING SIDEWALK FOR NEW RAMP INSTALLATIONS SHALL BE TO THE NEAREST EXPANSION OR CONTRACTION JOINT.
4. THE RUNNING SLOPE OF THE CURB RAMP SHALL BE 8.33 PERCENT MAXIMUM BUT SHALL NOT REQUIRE THE RAMP LENGTH TO EXCEED 15 FEET.
5. DETECTABLE WARNING SURFACES SHALL BE INSTALLED ON SIDEWALK RAMPS AT PEDESTRIAN STREET CROSSINGS, PEDESTRIAN REFUGE ISLANDS AND RAILROAD CROSSINGS ALONG STREETS OR HIGHWAYS.
6. DETECTABLE WARNING SURFACES SHALL EXTEND 2 FEET MIN. IN THE DIRECTION OF PEDESTRIAN TRAVEL AND SPAN THE ENTIRE RAMP OPENING.
7. ALL GUIDESHEET VALUES COMPLY WITH PROWAG DRAFT 2013 GUIDELINES. UPDATED VALUES WILL BE MADE TO COMPLY WITH PROWAG FINAL RULE ONCE OFFICIALLY THE LAW.
8. CTDOT DESIGN STANDARD USE THE PUBLIC RIGHT-OF-WAY ACCESSIBILITY GUIDELINES (PROWAG) SEE ENGINEERING DIRECTIVE ED-2019-7.
9. CURB RAMPS SHALL BE CONSTRUCTED SO THAT WATER WILL NOT ACCUMULATE WITHIN THE PEDESTRIAN ACCESS ROUTE.



PERPENDICULAR RAMP WITH NON-WALKING SURFACE (TYPE 11)



PERPENDICULAR RAMP WITH SIDEWALK CURB AND NON-WALKING SURFACE (TYPE 12)



PERPENDICULAR RAMP WITH NON-WALKING SURFACE (TYPE 13)

REV.	DATE	REVISION DESCRIPTION